



Now is the time to improve the
energy efficiency of your home.



Why are energy-efficient windows so important?

You'll probably know that the amount of energy we waste in our homes is directly linked to climate change. And you'll definitely know about the ever increasing cost of heating your home. But did you know that the glass you use in your windows can help your home be more energy-efficient? Your windows can have a big impact on the amount of energy you use, the comfort of your home and the cost of heating it – and if you're thinking of replacing them, look no further than the Pilkington **energiKare™** system.

So how does Pilkington **energiKare™** work?

Pilkington **energiKare™** is the name given to our range of double and triple glazing insulating glass units designed to improve the thermal efficiency of residential properties. A Pilkington **energiKare™** unit reduces the amount of heat lost through your windows and can also allow more heat energy from the sun through the glass. This so-called passive solar gain provides additional energy free of charge.

Pilkington **energiKare™** double glazing contains an optimised combination of glass, spacer bar and gas fill to achieve the best Window Energy Rating (WER) or U-value for each window application;

- The inner pane of glass comprises a product from either the Pilkington **K Glass™** Range, the UK's most recognised low-emissivity glass or the Pilkington **Optitherm™** range. Low-emissivity glass helps to prevent heat escaping through the window
- The outer pane of glass comprises:
Pilkington **Optiwhite™** our low-iron, extra clear glass or Pilkington **Optifloat™** Clear, our standard float glass. These allow solar heat gain to help your home feel warmer

Filling the double glazed unit with argon gas or using a warm edge spacer bar can help to further reduce the amount of heat loss. Improving the thermal performance of your window will make your home feel warmer.

The Benefits

- Improves the energy efficiency of your home
- Can reduce the amount of energy you use, saving you money
- Is more effective than single or basic double glazing
- Pilkington **energiKare™** is suitable for use in uPVC, timber and metal windows
- It incorporates glass from the Pilkington **K Glass™** or Pilkington **Optitherm™** ranges
- Manufactured to the highest British and European quality standards
- You can receive a Pilkington **energiKare™** certificate after installation

The Range

As well as the standard Pilkington **energiKare™** Insulating Glass Units (IGUs), the Pilkington **energiKare™** range comprises of:

Pilkington **energiKare™** Advantage – triple glazing performance in a double glazed unit, Pilkington **energiKare™** Triple – high performance triple glazing, for superior thermal efficiency and Pilkington **Spacia™** – ultra slim vacuum glazing, offering energy efficiency in a broader range of properties, including new homes and older traditional buildings.



Pilkington **Spacia™**



Pilkington **energiKare™** Triple

Doesn't all double glazing save energy?

Of course all double glazing offers a degree of energy efficiency. And it's still much better than single glazing.

However, Pilkington **energiKare™** is more than twice as energy-efficient as older uncoated double glazing. The Window Energy Rating (WER) scheme has been put in place to help make choosing windows easier.

Did you know?

Providing your existing frames are still in good condition, it is an option to just replace the glazing to see a huge potential improvement on the energy efficiency of your home.

Understanding Window Energy Rating System.

This system is similar to the one used for domestic appliances and light bulbs, and lets you compare the energy efficiency of the complete window and frame with competing products. Windows using Pilkington **energiKare™** units are A+ to C rated as they significantly reduce the amount of energy you use to heat your home.

Windows can achieve the highest rating of A+, depending on which product from the Pilkington **K Glass™** or Pilkington **Optitherm™** range is specified.

By using
Pilkington **energiKare™**
in your windows
you will:

- Improve the energy-efficiency of your home
- Save money on your heating bills
- Become more environmentally friendly!

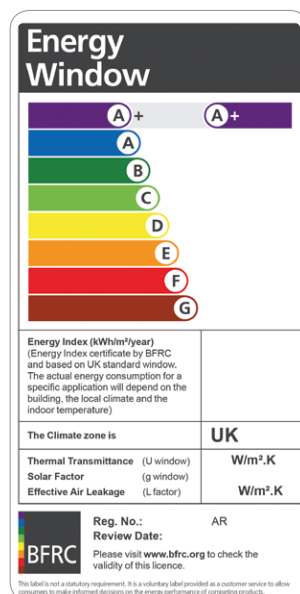




Image courtesy of Rowland Homes

Choose Pilkington **energiKare™** and save more than the environment.

Because Pilkington **energiKare™** can help most windows gain a minimum C rating on the Window Energy Rating scheme, you can rest assured that you're doing your bit to make your carbon footprint a couple of sizes smaller (a reduction of over 0.8T of household CO₂ each year).

A typical semi-detached house upgrading from single glazing

to A rated windows could save up to £5,000* over the lifetime of the windows. What's more, any home that is for sale now has to have an environmental rating and is sold with an Energy Performance Certificate. Using Pilkington **energiKare™** will contribute to this and could be a positive factor in selling your home.

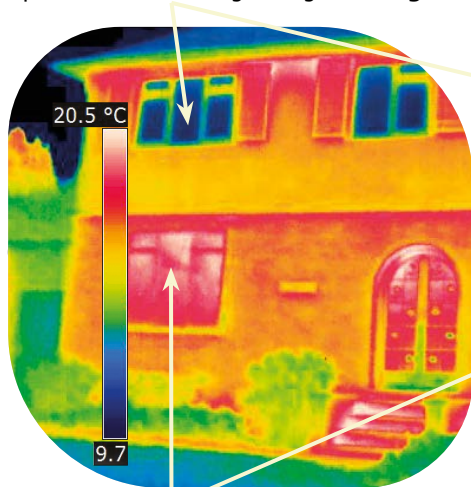


With Pilkington **energiKare™** less heat escapes.

As well achieving high levels of thermal insulation, Pilkington **energiKare** can also help windows to meet the requirements of the building regulations for energy efficiency in the UK (e.g. Part L in England).

These images show you just how effective Pilkington **energiKare™** is at reducing heat loss through your windows. The upstairs windows are fitted with Pilkington **energiKare™**, and the blue colour shows they're losing very little heat. Compare that with the red colour of the original style glazed window downstairs, you can see the difference.

Upstairs windows using Pilkington **energiKare™**



Original single glazed downstairs windows

So choose a product from the Pilkington **energiKare™** range today.
Visit www.pilkington.co.uk to find a window installer near you.

*Calculated using the Glass and Glazing Federation (GGF) Energy Savings Calculator. Based on replacing single glazed timber windows with A rated windows in typical semi-detached house with gas central heating over a 20 year period. Annual inflation rate of 5% assumed.
www.ggf.org.uk/energy-savings-calculator

YOUR LOCAL SUPPLIER:

This publication provides only a general description of the products. Further, more detailed, information may be obtained from your local supplier of Pilkington products. It is the responsibility of the user to ensure that the use of these products is appropriate for any particular application and that such use complies with all relevant legislation, standards, codes of practice and other requirements. To the fullest extent permitted by applicable laws, Nippon Sheet Glass Co. Ltd. and its subsidiary companies disclaim all liability for any error in or omission from this publication and for all consequences of relying on it.

Please note that imagery throughout is for illustration purposes only.



CE marking confirms that a product complies with its relevant harmonised European Norm. The Declaration of Performance for each product, including declared values, can be found at www.pilkington.com/CE



Pilkington United Kingdom Limited

European Technical Centre, Hall Lane, Lathom, Nr Ormskirk, Lancashire L40 5UF.

Telephone 01744 692000 Fax 01744 692880

pilkington@respond.uk.com

www.pilkington.co.uk